



The AFA offers a wide range of courses including coaching, medical, emergency aid, safeguarding children and refereeing. Courses are nationally accredited and on successful completion candidates will receive either a 1st4sport or FA qualification.



## The Coaching Pathway

A Coach Education Programme is important and can play a vital role in player development and that of a club. The programme has been put into place with the thought that, how can we assist coaches and potential coaches so they can develop their careers in football.

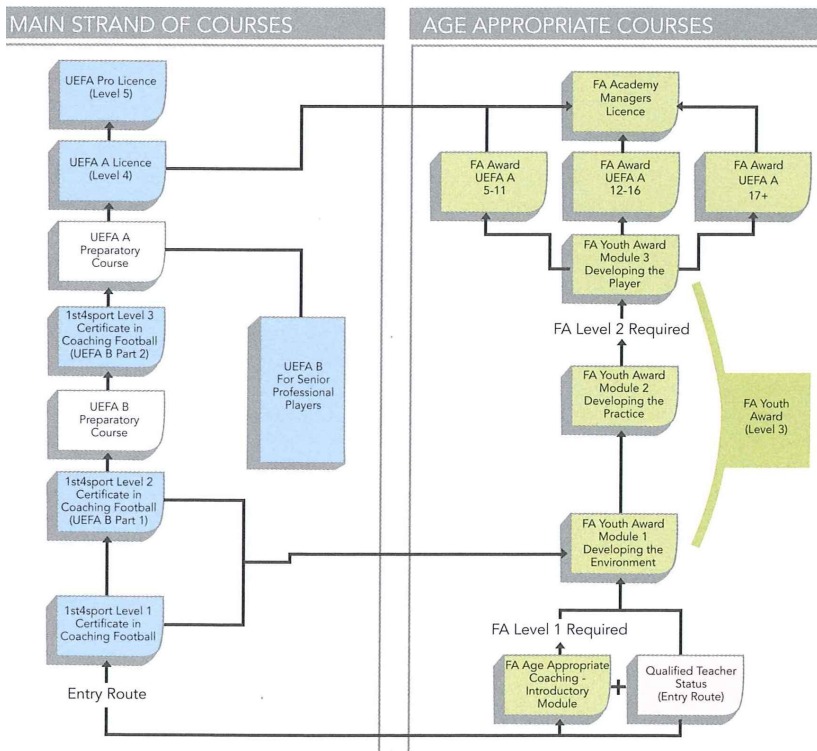
The coaching pathway is open to all club's members and provides the opportunity to obtain first hand experience of techniques employed in football, and sessions led by experienced coaches.

Here we will give you a comprehensive breakdown of courses available to you.

If you have any questions or would like further information please contact a member of the Football Development Team.

Football Development Officer: Bob Leeds  
[Bob.leeds@amateur-fa.com](mailto:Bob.leeds@amateur-fa.com) / 020 8733 2613 #7

Football Development Assistant: Samantha Brown  
[Samantha.brown@amateur-fa.com](mailto:Samantha.brown@amateur-fa.com) / 020 8733 2613 #4



## **1st4sport Level 1 Certificate in Coaching Football (L1CCF)**

The new Level 1 Certificate in Coaching Football (L1CCF) is awarded in partnership with The Football Association and is the first step towards becoming a recognised football coach.

This Level 1 vocationally related qualification provides you with an opportunity to study and be assessed in both practical and theoretical aspects of coaching football at this level. The certificate qualifies you to coach grass roots club teams for children and young people under the supervision of a qualified football coach.

The knowledge gained from this qualification will enable you to develop a basic understanding of safe, ethical and effective football coaching to young people. The qualification is a stepping stone to other vocationally related areas including coaching, officiating and sports therapy.

This course is a stepping stone to the Level 2 Coaching Award and the FA Age Appropriate Courses, and we encourage candidates to enrol on these.

There are no formal prerequisites for this award however candidates must be over 16 years of age. The course is aimed at participants who will be working with players between the ages of 7 to 16 years old.

Cost: £150 per candidate

### **1st4sport Level 2 Certificate in Coaching Football (L2CCF)**

The Level 2 Certificate in Coaching Football is the next step towards becoming a recognised football coach and is available to anyone over the age of 17 years.

The Certificate offers candidates a combination of practical experience and class-based theory, to develop an understanding of the planning, conducting and evaluation of ethical football coaching sessions.

This course is divided into two sections which includes a week long practical experience and the final assessment in the second week. Candidates are required to deliver a 35 minute practical coaching session based on a specific topic and answer questions on performance, knowledge and understanding.

This qualification is matched to the Level 2 National Occupational Standards for Coaching, Teaching and Instructing and sits at Level 2 of the National Qualifications Framework. The qualification is recognised to contribute to the achievements of Part One of the UEFA 'B' Coaching Award.

This qualification leads to the 1st 4sport Level 3 Certificate in Coaching Football

Cost: £300 per candidate

### **1st4sport Level 3 Certificate in Coaching Football (L3CCF)**

This course is intended for people over 18 years of age who have obtained the Level 2 Certificate and wish to coach teenagers and young adults.

This course is physically demanding and candidates should be reasonably fit. It is expected that all modules and contact sessions with tutors are attended.

Students will learn how to coach a player or small group of players working in a relevant area of the pitch and in a small sided game (8 v 8). They will be expected to demonstrate technical and tactical knowledge. Candidates are also required to study subjects such as injury identification and psychological aspects of football.

The internal assessment component will include the satisfactory completion of course tasks, two practical assignments, four written examination papers and a mock assessment. Practical and portfolio support sessions will be organised as part of the initial course of training. Only students who have completed satisfactorily the internal assessment requirements and the mock assessment will be recommended to undertake external assessment.

Coaches who complete their Level 3 and wish to further develop their coaching skills are welcome to apply for their FA Advanced License Award (UEFA A License).

### **Welfare Officers Workshop**

The Welfare Officer Workshop explores best practice in working with young people and provides clear guidance on implementing best practice and looks at how to address any gaps. This Workshop builds upon the ideas discussed during the Safeguarding Children workshops and is a compulsory course for any Club Welfare Officer (CWO).

Within this Workshop, the role and responsibilities of the CWO are identified and explored along with other designated persons, such as the statutory agencies. The focus is on becoming a proactive/club/league in terms of safeguarding initiatives rather than being reactive. It also seeks to build confidence in dealing with poor practice and concerns about potential child abuse via scenarios. Workshop participants are encouraged to share examples of best practice and learn from each others experiences.

Pre-requisites for the course are a CRB check and Safeguarding Children Workshop certificate.

## **Safeguarding Children Workshop**

This course is imperative for anyone involved with youth football. With the growth of youth football, particularly in the area of mini soccer for the under 10s, adults in charge need to be aware of their responsibilities to provide a safe and comfortable environment.

Those running youth teams, providing coaching or any other support to young people under the age of 18 should be able to ensure best practice.

This module is already included as a compulsory part of all FA courses, but can be attended by others not taking another programme.

For more information please contact Samantha on [samantha.brown@amateur-fa.com](mailto:samantha.brown@amateur-fa.com)

## **Emergency Aid**

The AFA offers a three-hour Emergency Aid courses both as part of a number of the coaching courses and as stand alone courses.

This is a 3 hour course and covers such topics as how to preserve a life (including CPR), promote recovery, dress wounds, major bleeding and choking.

We offer stand alone Emergency Aid courses or can organise a workshop specifically for your club.

For more information please visit our website [www.amateur-fa.com](http://www.amateur-fa.com)

## **CRB Process**

The AFA has adopted the FA Criminal Record Bureau (CRB) checks to ensure all children can play football in the knowledge they are safe and can enjoy themselves.

FA CRB checks are issued under the Police Act 1997 and are designed to help safeguard children by creating a safer workforce. The term 'workforce' also refers to volunteers and the voluntary sector.

The FA uses this information to decide if a person is suitable to be involved with children's football. Not everyone in football needs to undergo an FA CRB check. However, the law requires The FA ensures

that we do not allow those who are banned from working with children to be involved in youth football. The CRB process is how The FA identifies people who are banned. It also allows The FA to make responsible recruitment decisions about whether people have significant histories that are a potential risk to children. The FA can then prevent these people from being involved in youth football.

The FA charge £12 for a CRB check. This covers administration, advice, guidance and any actions needed as a result of the Disclosure.

A CRB check can take between 4 and 6 weeks.

Even if you have a CRB check from another source, The FA has taken advice on this as there can be risks in carrying disclosures from one job to another. To be deemed suitable to work in youth football you must have an FA Enhanced CRB check.

For more information please visit [www.thefa.com/TheFA/CRB](http://www.thefa.com/TheFA/CRB) or call The FA CRB helpline on 0845 210 80 80

## **FA Learning Introductory Module**

### Age Appropriate Coaching

The FA Learning Introductory Module - Age Appropriate Coaching is a vocational course that provides you with an opportunity to develop an awareness of both the practical and theoretical aspects of coaching young players in the 5-11 age group.

The knowledge gained from this Introductory Module will enable you to develop an understanding of the role of the football coach in working with young children aged 5-11.

The course has been developed by FA Learning using expertise from a variety of FA staff and experienced coaches. The role of a football coach is a rewarding and responsible one.

Players and clubs have high expectations of coaches' conduct and behaviour that must be understood and supported by everybody. Appropriate behaviour is managed by the employing club, but should sit within the expectations provided during your course.

Course cost: £25.00

## **FA Youth Module 1**

This brand new qualification, which forms the first of three parts of The FA Youth Qualification, is aimed at coaches working with young players.

Dealing with the 'how' to coach the course supports candidates to:

- Understand how to manage players motivation and self esteem in positive and appropriate ways
- Recognise how your players learn and encourage you to focus on supporting them to develop maximally
- Importantly, support you to manage your players mistakes, encouraging a 'can-do' approach from your players
- Experience a series of new game-related exercises that support your players to develop their technique and apply skill in environments where they make decisions

This four day course is a critical tool to support coaches working with young players and is an innovative qualification devised by The Football Association to further support the development of young players in England.

Course cost: £125.00

## **Referee Courses**

### **Basic Referees Training Course.**

This is an entry level course that enables you to qualify as a football referee. The course provides an introduction to the laws of the game as well as developing the practical skills you will need to be a referee.

You must be at least 14 years of age to attend a referees' course and have a reasonable degree of fitness as there is the need to referee matches as part of the course. There is no upper age limit to becoming a referee.

## Pre-course study

Once you have completed an application form, paid the course fee and been accepted onto the course you will receive a pre-course study pack. The pack requires you to complete some work before you attend the first course session and it is most important that you do this. Early in the course there will be an assessment of your basic knowledge of the laws of the game and refereeing and you must pass this assessment in order to carry on to complete the course.

The course is structured as five modules.

### Module 1- Introduction

This module will introduce you to some key aspects of football including the Laws of the Game and the role of the Referee

### Module 2- Practical Element

Practical elements of the course will provide you with an introduction to:

Warming up and cooling down activities

Positioning & movement at both set pieces & in open play

Managing game situations

Signals & communication techniques

FA Safeguarding Children workshop (included in the course programme)

### Module 3 – Examination

The pass mark for the examinations is 75% overall.

If you are unsuccessful in the examinations you can take them again after three months.

### Module 4 - Refereeing

Once you have completed the tutored part of the course and have passed the examinations you then go on to referee a minimum of six 11 v 11 matches. We will contact the referee's secretaries of cup, league and youth competitions who can offer you suitable refereeing appointments. Alternatively you could choose to referee matches at a school or for other youth or adult organisations.

## Module 5 – Qualification and The Next Steps

Once you have attended modules 1 to 3, passed the examinations and completed module 4 (your six initial matches) you are almost there! You then only need to attend module 5 - a final session designed to prepare you for life as a fully qualified referee and to advise you of the next steps that you can take to develop your skills and knowledge as a referee.

This final session lasts around 2 to 3 hours and includes presentation of your certificate from the Football Association showing that you are now a qualified referee.

For more information on becoming a referee and referee courses please contact John Monk on [john.monk@amateur-fa.com](mailto:john.monk@amateur-fa.com) or 020 8733 2613

### **Booking courses**

You can now book courses online at <http://eventspace.thefa.com/amateur-fa/participant/s.aspx> and see a comprehensive list of all courses available to you.

For further information please contact the Football Development Team on [bob.leeds@amateur-fa.com](mailto:bob.leeds@amateur-fa.com) or [samantha.brown@amateur-fa.com](mailto:samantha.brown@amateur-fa.com) or telephone 020 8733 2613